



REPORT ON THE SURVEY OF CHILDREN AND YOUNG PEOPLE IN THE SID VALLEY



Sid Valley Students Having their Say

June 2017

SID VALLEY NEIGHBOURHOOD PLAN STEERING GROUP

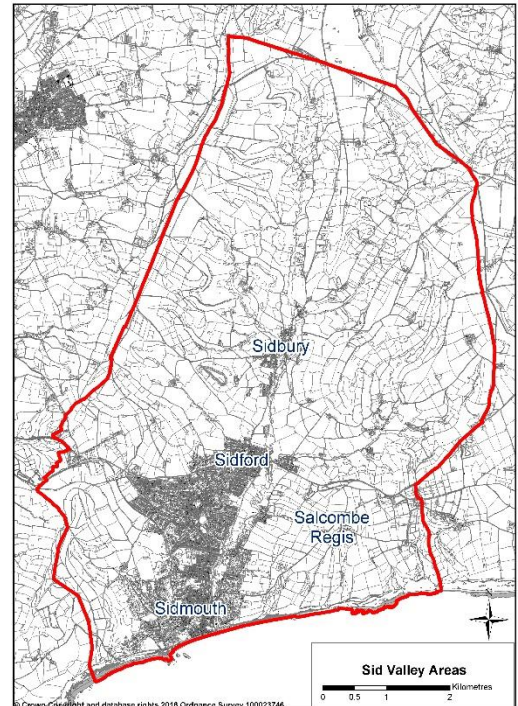
Table of Contents

Section 1 Overview	3
Sid Valley Neighbourhood Plan Area	3
Acknowledgements	3
Foreword	4
 Section 2 Executive Summary.....	 5
Figure 1. Aspirations for the Sid Valley drawn by primary school students.....	7
 Section 3 Introduction.....	 8
Legal Context of Neighbourhood Plans.....	10
 Section 4 Process.....	 11
4.1 How the survey was carried out.....	12
4.2 Analysis and report preparation.....	12
Figure 2. Ideas Word Cloud.....	13
 Section 5 Analysis.....	 14
5.1 General comments on responses.....	16
 Section 6 Next Steps.....	 17
 Section 7 Appendices.....	 18
Contact details.....	18

SECTION 1 OVERVIEW

SID VALLEY NEIGHBOURHOOD PLAN AREA

The Sid Valley Neighbourhood Plan boundary area agreed by the planning authority East Devon District Council includes the Sidmouth Town Council Wards of Salcombe Regis, Sidbury, Sidford, and Sidmouth.



ACKNOWLEDGEMENTS

The information provided by the questionnaire respondents alongside the production of the survey, administration, collation, analysis, comment and contributions that have gone into this report are gratefully acknowledged and are referenced below;

Sidmouth Town Council Chairman of the Council Jeff Turner and Councillors.

The Town Clerk Chris Holland

Sid Valley Neighbourhood Plan Steering Group

Deirdre Hounsom, Louise Cole Ian McKenzie-Edwards, Michael Earthey, Peter Murphy, Graham Cooper, Claire Russell, Richard Thurlow, Jeremy Woodward. Jonathan Davey, Andie Miles

Sid Valley Neighbourhood Plan Young People's Advisory Group

Students from years 5 to 12 from Sidmouth Primary School, Sidbury Primary School, St Johns School and Sidmouth College.

Neighbourhood Plan Administrator Tim Salt

Graphic Design Lou Turley, Tiny Designs

Photographic Credits Sid Valley Schools, Louise Cole, Deirdre Hounsom

Vouchers provided by Sidmouth businesses Paragon Books, Wyevale Garden Centre, Winstone's Books.

FOREWORD

The preparation of a Neighbourhood Plan involves finding out the views on a wide range of issues from residents in the Sid Valley. We have already consulted via a Household survey, and a Business and Special Interest Groups survey, as well as a Community workshop. The Sid Valley Neighbourhood Plan Steering Group believe that it is vital to find out the views of a range of younger people in our community and to give them a voice in the future development of the Sid Valley.



Early in the Neighbourhood Plan process we invited all the Sid Valley schools to get involved and set up a Young People's Advisory Group to give a real opportunity to children and young people, not only to be consulted with, but to be part of the design of the consultation itself. Part of the process was to empower young people to understand what a Neighbourhood Plan is and what it can achieve so that they could be full participants involved in the process. The resulting questionnaires for two age groups, was the outcome of a highly participatory collaborative process which culminated in the questionnaires being sent out to all schools in the Sid Valley.

This report reflects the views of 477 primary school children and 622 secondary school children, which just like our other surveys, will contribute to, and build on, a growing body of evidence on which our Neighbourhood Plan will be based. We are sharing the results of this survey with all residents of the Sid Valley including of course the young people who took part.

On behalf of the whole community our ongoing role is to gather views and different perspectives and to review wider evidence of need to support the development of policies and community actions for the Neighbourhood Plan which reflect evidence rather than opinion.

We would like to thank the Young People's Advisory Group for their hard work in planning, designing and shaping their consultation, to the teachers who supported the process and to all the children and young people who took part in this consultation, for giving their time and sharing their views with us.

A handwritten signature in black ink, appearing to read 'Deirdre Hounsom'.

Deirdre Hounsom, Chair

A handwritten signature in black ink, appearing to read 'Louise M. Cole'.

Cllr. Louise Cole, Deputy Chair

Sid Valley Neighbourhood Plan Steering Group



Young People's Advisory Group Meeting at Sidmouth Town Council

SECTION 2 EXECUTIVE SUMMARY

In December 2016, the Sid Valley Neighbourhood Plan Steering Group carried out a children and young people's consultation to ensure the views and aspirations of young people throughout the Sid Valley were gathered and their voices heard.

Building on previous public surveys our aim was to understand what matters to young people in our community in terms of current likes and dislikes and their vision for the community over the next 15 years.

The views identified in the first Household Survey enabled us to draw out seven key themes which address the main areas of concern to the residents of the Sid Valley. The themes are; Built Environment, Natural Environment, Housing, Economic Resilience, Community and Culture, Transport, and Eastern Town. These key areas were used by the young people from Sid Valley schools when it came to designing their own survey, to ensure that their views could be taken into account, alongside those of other residents.

The result was the production of two questionnaires, one for the younger age range (Appendix 1) and one for the older children and teens (Appendix 2) in our town and villages, which were distributed to them in hard copy.

This report provides an insight into the opinions gathered from 1099 children and young people. Their views, alongside those of other residents, will help us to draft policies that relate to land use, and to develop Community Actions where priorities that are not land use related are identified.

The views of young people echoed the voices of the wider community when they spoke of a sense of wellbeing and their recognition of the value of the natural environment and our coastal location. Favourite places included the Byes and the beaches and the open green spaces which were valued for the sense of health, well-being and safety that young people recognise and place most value on. 46% highlighted the importance of our healthy and safe community with 37% acknowledging the natural environment as a key feature. Young people spoke clearly about the importance of family and community with over 50% saying that activities with their family and friends were amongst their favourites. They spoke about their appreciation of existing walking and cycling paths which improve safety and enjoyment and link to the distinct areas within the Sid Valley.

Their collective views also contained a wealth of ideas and suggestions about how to improve the Sid Valley for young people. *Figure 1* below gives a visual snap shot of some of the drawings that primary school children shared when asked about what they wanted to see in the Sid Valley in the future. *Figure 2* (page 12) is a word cloud showing all of the ideas that young people have which are important to them individually to improve the Sid Valley and to make it an even better place to live.

There were gaps identified and a range of suggestions of how to shape the Sid Valley to be more responsive to their urban and rural needs including indoor venues and young people friendly and affordable shops, cafes and restaurants, to cater more specifically for children and young people. A skate park and water park featured repeatedly as aspirations and many will be pleased to know that initial planning for a project to build a new skate park has already started. Some also gave thoughtful responses



when asked what would encourage them to stay in the Sid Valley as adults and suggestions included improved health facilities, family housing and improving education facilities and social care.

We learnt from overall responses that many are unaware of what Port Royal is, though a description of where it is was included. Of those who responded there was a desire to see water based activities, a pier or jetty was referred to and young people friendly shops and restaurants were seen as desirable as part of any redevelopment. 21% specifically mentioned the Ham and the play park as most important to them. Any development of Port Royal needs to consider the needs of teenagers and young adults for social engagement, and sports and leisure facilities.

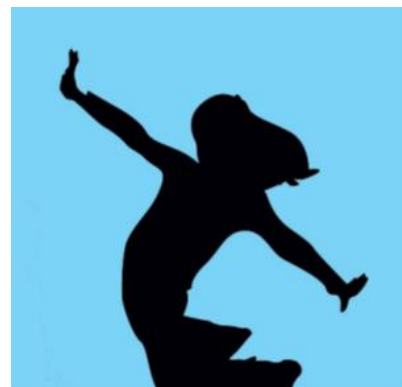
It seems clear that young people hope for interesting career opportunities, mentioned by 341 young people when asked what would help them to stay in the Sid Valley as an adult, highlighting the need to create varied employment that goes beyond the retail, care and hospitality sectors.

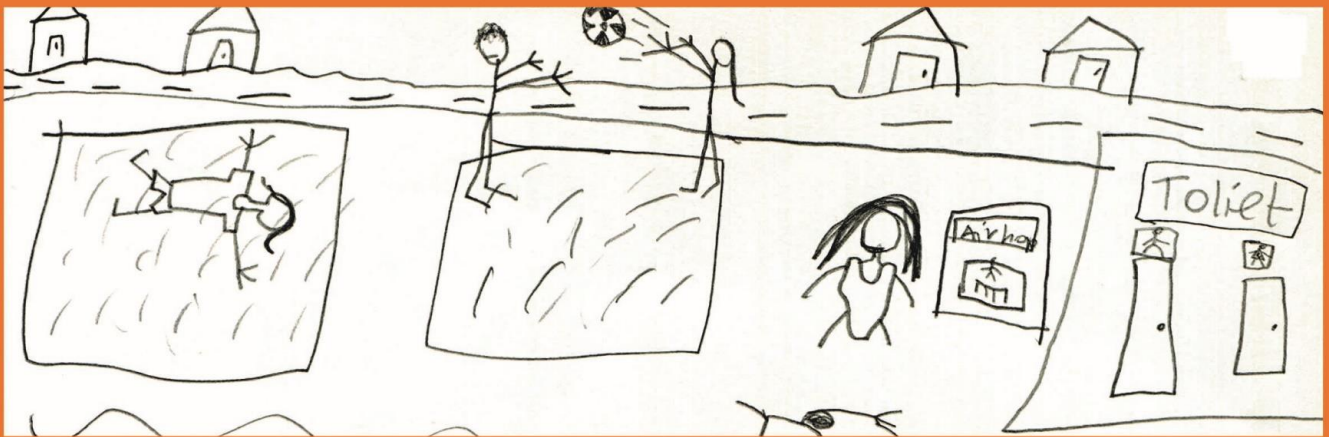
Another similarity noted to the older age group we consulted with previously was the notion that the younger generation are also concerned about too much change and their views, with reference to both the natural and built environments, were very much about conservation and preservation. Comments included the need to reflect our fishing heritage and to protect historic buildings in any development, and to care for the countryside and coastline.

The following report provides an overview analysis of responses and also includes specific ideas to make the Sid Valley even better suited for children, young people and their families. It is clear that incorporation of the views of young people will help to draw up a plan which contains appropriate policies which meet the needs of our whole community.

By ensuring that future development takes account of children and young people, we will be better able to create and sustain a vibrant community that continues to enjoy and preserve our enviable location.

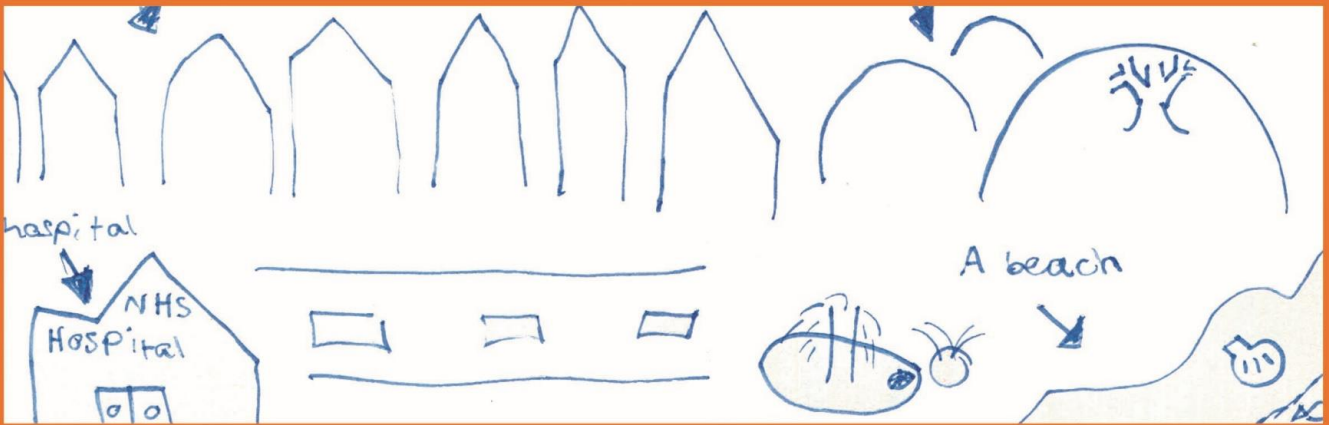
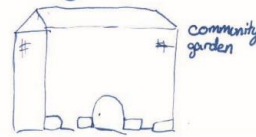
The Sid Valley Neighbourhood Plan can help to achieve this by creating the conditions for employment and housing that will sustain and retain in the future, those who are children and young people now who will become the residents, employees, business owners, community leaders and employers of the future.





I want it to look as beautiful as it looks now.

A Communitree Garden and a bigger swimming pool.



In the future I would like Sid Valley to mostly stay the same but also have a ^{indoor} play zone. I would also like there to be more tennis courts and for all of them to be open all year.

Fun



I would like the trees ^{and nature} to be ^{stay} protected; and most of it to stay the same. In the future I also hope that the Sidmouth pool could have a slide. No homeless.

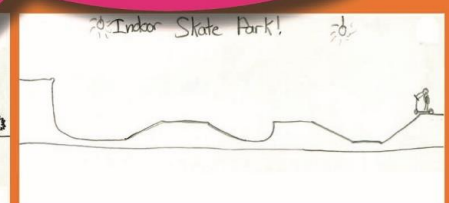
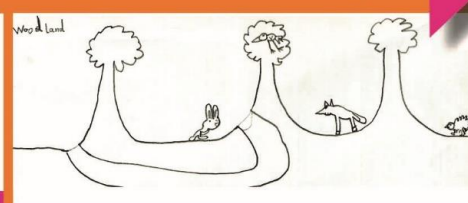
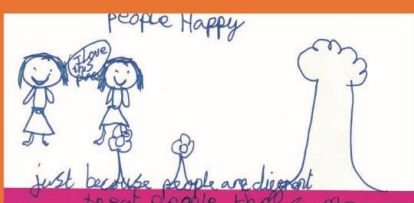


Figure 1 : Aspirations for the Sid Valley drawn by primary school students

SECTION 3 INTRODUCTION

The Children and Young People's Advisory Group, made up of students from Years 5 to 12 (ages 10 to 18) from all the Sid Valley Schools, was established following an initial meeting at the Sidmouth Business Café on 11th May 2016 at the Woodlands Hotel.



Sid Valley Students attend the Sidmouth Business Café NP briefing

Two subsequent cross-school workshops (23rd September 2016 at Sidmouth College and 9th November 2016 at Sidmouth Town Council) were held to explore with them the types of questions that should be asked, the look and design of the surveys and how they felt the questionnaires should be disseminated to children and young people. The group advised on the colours, graphics and the question wording, numbers of questions and fonts to use, to help to engage children in the task of completing the surveys. Two representatives from the Young People's Advisory Group also participated in the "Have Your Say" event at Kennaway House on 27th January 2017. We were supported by local businesses Paragon Books, Wyevale Garden Centre and Winstone's Books who, at the suggestion of the Advisory Group, provided vouchers for inclusion within the surveys to help us to promote the surveys and the Neighbourhood Plan process to young people and their families.

The Sidmouth Town Council workshop also gave the group the opportunity to understand the role of the parish council through discussions with the Town Clerk and the experience of working in the Council Chamber with local Councillors.

The Children and Young People's survey (CYP), ran for the first two weeks of December 2016.

The CYP is one of a series of consultation initiatives which include the following:

- First Household Questionnaire – June & July 2016
- Business & Special Interest Groups Survey – September & October 2016
- Second Household Questionnaire Consultation May & June 2017

The Steering Group decision to conduct a CYP was based on the need to continue to build our community evidence base from different perspectives. Community views will primarily form the basis for our Neighbourhood Plan land use policies, which will be scrutinised against wider evidence. Additionally, the Neighbourhood Plan process helps to ensure we have a whole picture of community views and aspirations which may include non-land-related issues which could go on to form Community Actions for the community to take forward as priorities.

The CYP survey was designed to elicit the opinions of Children and Young People of school age in the Sid Valley. We sought comments from them about the things they like and dislike and their views about what they would like to see in the future. The questions covered the same themes as the First Household Survey - including the built and natural environment, community and culture, economic resilience, transport, housing and Port Royal.

Once our draft plan has been inspected by East Devon District Council and an Independent Examiner, there will be a referendum for the people of the Sid Valley to vote on whether to “make” the plan. The referendum if passed by a simple majority will result in the plan being “made”, at which point it will become a legal planning document which will influence future developments in the Sid Valley.



Sidmouth College Head Students at the Kennaway House focus group event



“I want to get something across that
may be different to how adults see things”

**Member of the Sid Valley Neighbourhood Plan
Young People’s Advisory Group**



LEGAL CONTEXT OF NEIGHBOURHOOD PLANS



Localism Act 2011



LOCALISM AND COMMUNITIES

Neighbourhood planning for communities was introduced through the Localism Act 2011. Communities can shape development in their areas through the production of a Neighbourhood Plan.

Neighbourhood Plans become part of the statutory process and the policies contained within them are then used in the determination of planning applications. It must be stressed that the policies produced cannot block development that is already part of the Local Plan. What they can do is shape where that development will go and what it will look like. Having a Neighbourhood Plan in place which is based on community consultation and evidence will help us to influence the type and nature of what is already in the Local Plan.

Additionally, it will ensure that any further development is acceptable to the people of the Sid Valley, is appropriate and meets their needs and aspirations.

A STATUTORY PROCESS

The Neighbourhood Planning process has a structure guided by the Department for Communities and Local Government which includes some compulsory steps which are managed by the local planning authority – in our case East Devon District Council. The Sid Valley Neighbourhood Plan Steering Group is working on behalf of Sidmouth Town Council as the authoritative body for the Neighbourhood Plan. The Steering Group is made up of eight community members and three Sidmouth Town Councillors.

We are now about half way through the process of preparing the Neighbourhood Plan for the Sid Valley. When we have done this, East Devon District Council, will organise both the independent examination of the plan and the community referendum that will be held to decide if the plan is brought into force. The referendum is an important step, allowing those that live in the neighbourhood area to decide whether or not the Neighbourhood Plan comes into effect.

The Neighbourhood Plan once made acquires statutory status, the opportunities both during the making of the plan and after, create an enabling environment for close cooperation between Sidmouth Town Council, Community Groups and EDDC and Devon County Council. Such cooperation upholds the principle of community involvement, formalised by the Localism Act, of which Neighbourhood Planning provides the statutory instrument to influence how the Local Plan is interpreted and enforced and to integrate the provisions of the Neighbourhood Plan accordingly.

SECTION 4 PROCESS

From the collation of the data in the First Household Survey, it was clear that seven “themes”, underlay all the responses. These seven key themes are listed below, and it can be seen that they include all topics and developments of community interest. The questions included in both the primary school aged and older secondary school aged group surveys were designed with the Young People’s Advisory group to cover these same themes in an age appropriate way and using language that would engage young people in the topics covered.

The number of questions asked was significantly reduced for the CYPs surveys and less in-depth, to ensure the survey remained accessible to children and young people of all ages and abilities. Accordingly, we have analysed the responses solely on the answers to the questions in the survey, and from this we have cross referenced the topic based questions to provide insights into the Themes.

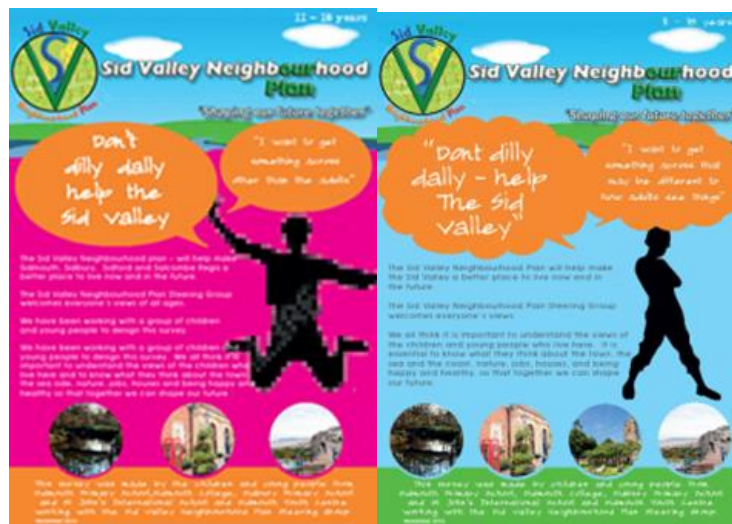


1. Built Environment	
<ul style="list-style-type: none"> * Sustainable development * Historic streets and heritage buildings * Built-up area boundaries * Public places and townscape assets * Design and local distinctiveness 	<ul style="list-style-type: none"> * Brownfield sites * Energy efficiency * Renewable energy * Commercial developments
2. Natural Environment	
<ul style="list-style-type: none"> * World Heritage coastline and AONB landscape * Coastal protection (beach management and flood prevention) * Ecological (bio) diversity 	<ul style="list-style-type: none"> * Pollution * Litter and vandalism * Climate change
3. Housing	
<ul style="list-style-type: none"> * Local housing needs * Affordable housing * Windfall development * Residential conversions 	<ul style="list-style-type: none"> * Infrastructure (utilities) * Waste recycling * Second homes
4. Economic Resilience	
<ul style="list-style-type: none"> * New employment land * Higher wage economy * Retail 	<ul style="list-style-type: none"> * Tourism * Agriculture * Creative industries and upskilling
5. Community and Culture	
<ul style="list-style-type: none"> * Health and well-being * Balanced community * Culture and entertainment 	<ul style="list-style-type: none"> * Leisure facilities and recreation spaces * Safe town and crime prevention * Young people
6. Transport	
<ul style="list-style-type: none"> * Road safety * Pedestrian access to town spaces * Footpaths, bridleways and cycle ways 	<ul style="list-style-type: none"> * Traffic congestion * Parking * Public transport
7. Eastern Town Regeneration	

4.1 HOW THE SURVEY WAS CARRIED OUT

Two surveys were produced, one for primary school children aged 5 to 11 years and one for secondary school aged children aged 11 to 18 years. The three Sid Valley Primary schools were Sidmouth, Sidbury and St John's and the two Secondary schools were Sidmouth College and St John's School. King's School was also offered surveys for those young people who live in the Sid Valley areas but this was not widely taken up.

Questionnaires were delivered to the schools and responses were completed under teacher's supervision, surveys were also given to Sidmouth Youth Centre and were available for young people not in school.



4.2 Analysis and Report Preparation

We received 477 completed questionnaires from the younger age group and 622 from the 11 to 18 years age group. Respondents were asked to provide their thoughts in eight free-text questions in narrative style, listing facilities or issues that interested or concerned them along with a larger number of multiple choice questions. Within the primary age survey, children were given the option in question 9 to either write or draw their ideas about what they want the Sid Valley to be like in the future.

With narrative style responses, it is impossible to capture exactly what each respondent has said. We employed a common thematic analysis methodology for narrative responses. Using a worksheet and based on the seven Themes that emerged during our First Household Questionnaire, a count was kept of the number of times an issue arose.

These worksheets were collated by the administrator and the totals of the responses were recorded in an Excel database – a report of which is in Appendix 3 and 4. This report lists the major responses for each question under each of the seven Themes and a percentage for that response based on the total number of responses received for that question. Section 5 which follows contains the narrative and statistical analysis of the CYP survey question responses against each question in the survey. Section 5 also contains an analysis these in terms of “Themes” as far as we are able to.

A range of ideas were shared by those who completed the surveys which are important to recognise as individual ideas, as well as to analyse using a thematic cluster approach, placing similar ideas together. It is important for both the young people completing the survey and for the community, that whilst it is not possible for individual ideas to be taken forward in their entirety, they provide a valuable insight into what

is important for the young people in our community. We have collated the range of ideas put forward in response to being asked what improvements would you like to see in the Sid Valley, into a word cloud which can be seen in *Figure 2* below. The word cloud provides a useful visual perspective of the aggregate responses we received. It is the intention of the Sid Valley Neighbourhood Plan Steering Group to ensure these views collectively are reflected in the Neighbourhood Plan policies and Community Actions.

Figure 2. Ideas Word Cloud



SECTION 5 ANALYSIS

Analysis was carried out by the Steering Group Theme Teams (Appendix 3) and collated by the report writing team providing a scrutiny and checking process to ensure consistency and accuracy.

The following analysis is based on aggregate data collated from responses to survey Questions 5 to 12 (Appendix 1) which sought narrative answers. Analysis comments below are made about the two sets of responses to questions 5 to 12 (Primary Schools; Year 1 to 6 and Secondary Schools; Aged 11 to 18 years).



Q5. What are your favourite places in the area/What do you like most about where you live?

Primary Schools; The Beach (61% of responses), Parks (52%), The Byes (45%) scored highly, with Shops (36%), Town (30%), and My village (18%), all registering as their favourite places.

Secondary Schools; The Beach (53%), The Byes (30%), My Town (29%) and facilities in the town scored highly. 29% mentioned Sports and interestingly Feeling Safe was a significant statement, with 25% of respondents mentioning it.

General comments; The Beach, town environment and green spaces are valued by all age groups.

Q6. What are your favourite things to do in the Sid Valley/What activities do you like to do in your spare time?

Primary schools; “Being with family and friends” scored 71% with “going to the beach”, playing sports, “playing in the park” each being mentioned by nearly 50% of respondents.

Secondary schools; “Going out with friends” (64%), was a major occupation for this group, with “eating out” (45%), “being on the beach” (38%) online games (36%), also being popular. Swimming, cinema, shopping, music and football all registered 30% with many other physical activities being important and scoring 10-25%. The answers demonstrated a huge range of interests and activities undertaken.

General comments: There was a clear appreciation of the excellent outdoor facilities, the opportunities afforded by our natural environment and coastal location and the activities the valley has to offer.

Q7. What activities would you like to do that the Sid Valley doesn't have/ What do other Areas have that the Sid valley lacks?

Primary Schools: A “water park” was the main response, with 14% of responses mentioning it. Climbing wall and ice skating also captured their imagination. There were over 70 other desirable activities mentioned that aren't available to young people in the Sid Valley. These ideas are captured in their entirety in Appendix 3.

Secondary Schools; Fast food restaurants, (21%) were noted as being absent in the Sid Valley along with 80 other activities or facilities. These been captured in their entirety in Appendix 3.

General: The recurrence of fast food restaurants as a notable absence could reasonably be interpreted as a desire for affordable and young people friendly places to eat and drink and spend time in. Clearly the need for more facilities for a range of activities specific to young people can be seen as a desirable factor in ensuring that our children and young people are happy, healthy and safe.

Q8. Primary schools /Q9 Secondary schools; What is most important to you?

Primary Schools; being safe and happy scored highly, (50%) as did enjoying the sea (45%). The responses demonstrated that in this age range, the young peoples' environment and their security is highly important to their wellbeing.

Secondary schools; Healthy and Safe Community scored 46%, with Natural Environment (38%), Transport (35%), Housing (25%), Economy (18%), and Buildings (28%). The answers demonstrate the importance all children and young people place on feeling secure in a safe environment.



Q9. Ideas about what you want the Sid valley to be like in the future (Primary schools only)

Primary Schools: This question was similar to Q7 and therefore the answers were broadly the same. Again the desire for a Water Park – as covered in responses to Q7, (4%), then the preservation of the natural environment and beaches, happy community, improved parks all featured. (A selection of the drawings which some children did as their response to this question can be seen in *Figure 1*. Page 6)

Q10. When you are an adult what would be important for you to help you stay living in the Sid Valley?

Primary Schools; Having fun things to do featured highly, with 56% of answers quoting this closely followed by activities for families (46%), good schools (42%) and “Places to live” registering 36%.

Secondary Schools: Responses showed an understanding of the needs to attract young adults, with interesting jobs, places to live, fun things to do, shops and good schools all featuring responses over 40%.

General; There was a clear hope for the creation of interesting jobs which were seen as being needed in the Sid Valley which, together with affordable housing, would encourage young people to stay in the area when they become adults.

Q11. What is important to you about Port Royal? (Secondary schools only)

The freedom of the Ham area to play and socialize was important (19%). The existing facilities, (Lifeboat, Swimming Pool, etc.) were also mentioned.



Q12. What would you like to happen there in the future? (Secondary schools only)

Retail (7%), events (10%) and better sports and swimming facilities also featured. The area is valued as a public space and a place to meet up and socialise with friends, which should retain the existing facilities in the future.

5.1 GENERAL COMMENTS ON RESPONSES

Both Primary and Secondary groups felt that the Sid Valley was a safe and happy area to live and for spending time with friends and family. They identified that living in an AONB combined with the beach and other open spaces was what they liked best about living in the Sid valley

While over 25% of the teenagers love visiting the cafes and shops, they came up with over 100 ideas for alternative activities and entertainment they would like. Over 50% would want more fun things to do, interesting local jobs and more places for young people to meet and socialise if they are going to remain in the Sid Valley when they are older.



Teenagers need more venues that are going to welcome them in on a rainy day and offer more general entertainment for the town. Any development around Port Royal area needs to consider the needs of teenagers and young adults for social engagement, and sports and leisure facilities. It seems clear that young people want interesting career opportunities and perceive that currently these are lacking.

Overall, it seems that Secondary School children responding to this survey are less engaged directly in terms of the economy and regeneration but whose clear needs involving friends and family, active leisure, enjoying the beach and the environment and their desire for more and improved facilities all relate to these themes. The survey responses reflect the wider general community perception seen in our previous consultations that engaging our young people more proactively is key to ensuring a balanced community.



The predominance of active outdoor activities and social interaction all year round is highly encouraging for health; indoor interests; fast-food outlets and computer games only featured as minority responses but are practical concerns and ones which translate to ensuring a vibrant economy which is up to date with the technological needs of all communities today. Addressing some of the gaps highlighted by children and young people such as types and range of shops, indoor venues and places to eat and drink for young people in order to better serve young residents as well as young visitors and families is a key consideration which crosses the commercial, public and community sectors.

SECTION 6 NEXT STEPS

This report together with the analysis reports of the First Household questionnaire, the Business and Special Interest Groups Survey, the evidence and views provided by the “Have Your Say” event, the Housing Need’s Survey commissioned by the Steering Group and our latest Household Questionnaire will **all** inform the draft policies and Community Actions in the Sid Valley Neighbourhood Plan itself.

The Neighbourhood Plan Steering Group is committed to providing an ongoing voice to the young people of the Sid Valley. We will continue to create opportunities for them to contribute to the shared conversations in the community about issues that both affect and are affected by, young people.

Already two representatives of the Young People’s Advisory Group, Beth Hall (Sidmouth College Head Girl) and Izzy Marshall (Sidmouth College Year 7) have presented initial findings of the Children and Young People’s Survey to Sidmouth Town Council and members of the public at the Annual Town Assembly on 3rd April 2017.

Sidmouth Town Councillors expressed their appreciation for the views of the young people of the Sid Valley and for the hard work of the Young People’s Advisory Group.



The Advisory Group have told us how important it is to be part of local decision making and how valued they felt to not only be asked for their views, but also to be involved from the outset as part of the design process. They told us how previously they knew little about how the Town Council worked or about Neighbourhood Planning and said how empowered they felt to be learning and getting involved at the same time. Through continuing to work with schools in the area to include their feedback on the draft Neighbourhood Plan we can ensure that young people are **integral** to the process rather than **additional**.

In June 2017 we launched the last of our planned consultations – this questionnaire was sent to every one of the 7500 households in the Sid Valley Neighbourhood Plan area. This final survey seeks views on the issues that have been raised in earlier consultations in order to identify support, or not, for emerging policies and community actions. These responses will help to shape the Draft Neighbourhood Plan which the community will have a further opportunity to comment on before it goes for inspection and final consultation – a process managed by East Devon District Council.

Once finalised there will be a Referendum for the people of the Sid Valley and if passed by a simple majority, the plan “is made” and will then become a legal document to be used in the planning process. Everyone who is on the electoral register will be able to vote in this referendum, and whilst we know that most of the children and young people who took part in the surveys designed for and by them will not be able to vote for the plan, it is vital that their voices are heard and their views are reflected in the Sid Valley Neighbourhood Plan.

Engaging our young people in local democracy and helping them to understand what makes a vibrant community for all is an important part of the process. Ensuring that the community listens to their views helps all of us to be more balanced in our aspirations and will mean that development in our community is appropriate for all.

SECTION 7 APPENDICES

Appendix 1

Primary School Survey attached as a separate document

Appendix 2

Secondary School Survey attached as a separate document

Appendix 3

Primary School Survey Data Capture attached as a separate document

Appendix 4

Secondary School Survey Data Capture attached as a separate document



Contact Details

More information about Neighbourhood Planning can be found on the Neighbourhood Plan website at <https://sidvalleyneighbourhoodplan.com/> You can follow our progress or contact us via the following:



Search: "Sid Valley Neighbourhood Plan"



@sidvalleyplan



neighbourhood@sidmouth.gov.uk

Or write to us at Sidmouth Town Council, Woolcombe House, Woolcombe Lane, Sidmouth, EX10 9BB