



# Introduction to the Neighbourhood Plan process

**Councillor Louise Cole**

(previously Chair of Sidmouth Neighbourhood Plan Task and Finish Forum)

Sid Valley Neighbourhood Plan Steering Group Meeting  
Monday 21st March 2016



## Key Messages

The Neighbourhood Plan is not just about Eastern Town. It's about the whole of the Sid Valley including the villages of Salcombe Regis, Sidbury and Sidford.

The Neighbourhood Plan, once agreed, is an official statutory document to be used in the planning process; but its provisions cannot conflict with or overrule the Local Plan.

The Neighbourhood Plan is the one real opportunity for local people to influence how their locality develops in the future.

# Department for Communities and Local Government 2011



Department for  
Communities and  
Local Government

“The government has introduced the community right to do neighbourhood planning through the Localism Act. The planning system helps decide what gets built, where and when. It is essential for supporting economic growth, improving people’s quality of life, and protecting the natural environment.

Sid Valley Neighbourhood Plan



# What are the potential benefits?

- Shared vision
- Build relationships
- Protect and promote the interests of Sidmouth
- Economic benefit to the town
- Statutory weight



The Neighbourhood Plan would enable the community to determine its priorities and influence the nature and type of developments.





# What are the potential pitfalls?

- Complexity
- Communications & understanding
- Response rates to public consultation
- Time and money
- Managing expectations

The Neighbourhood Plan would enable the community to determine its priorities and influence the nature and type of developments.



# What are the possible themes the NP will cover?

1. Housing Needs/Affordable Housing/Family and Retirement needs
2. Transport & Traffic/ Town centre access/parking/park and ride
3. Employment
4. East End of Sidmouth/Port Royal
5. Beach Management
6. Tourism/Hotels/retention/alternative use
7. Design and Local Distinctiveness
8. Trees and Development Sites
9. Display of Advertisements
10. Community Assets
11. Natural environment/AONB
12. Allocation of individual sites
13. General opportunities for enhancement of the Town
14. Priority Community Actions which emerge through consultation
15. Community facilities



# What is the cost?

This is based on the experience of others and takes into account the total population of the Sid Valley area. 3 cost areas planned for over 3 budgetary years:

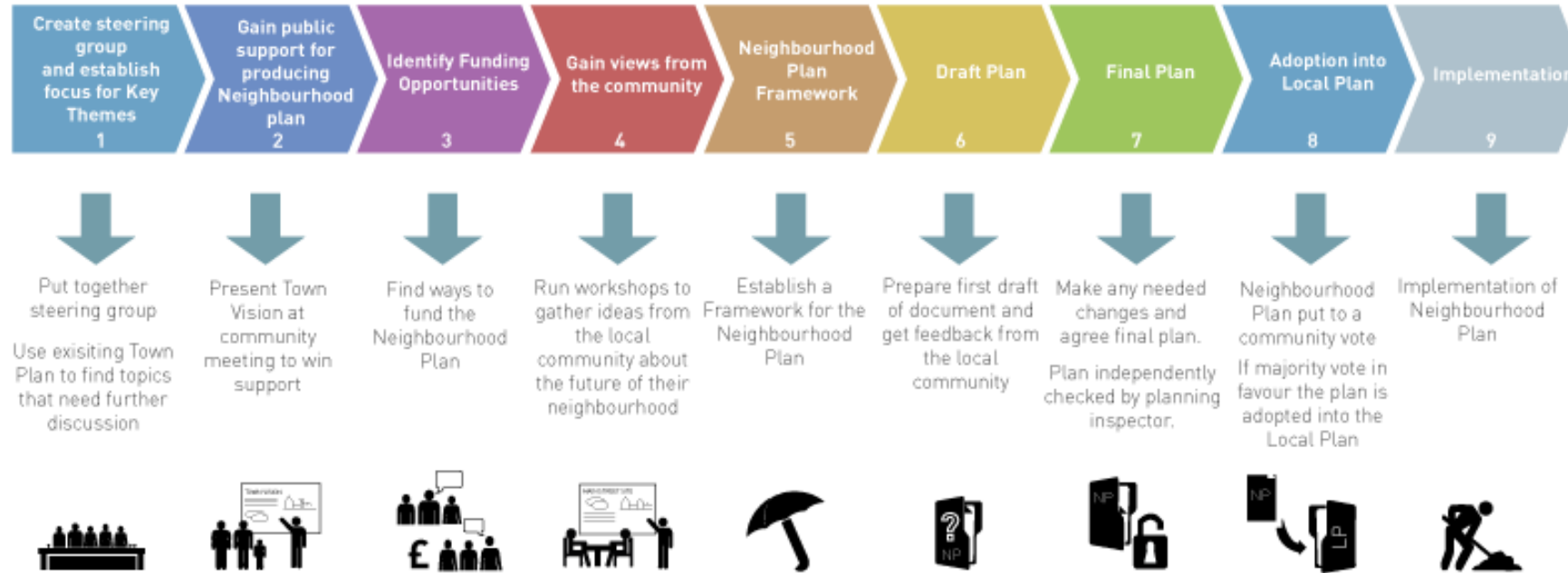
Community Consultations	£5,000
Consultancy & Administration	£35,500
Graphic Design & Printing	£5,500
Total Project Cost	£46,000

We anticipate being able to immediately raise £6,000 (from EDDC/Government) and would subsequently expect to raise additional money.



# What are the steps in the statutory process?

## THE STEPS TO CREATING YOUR NEIGHBOURHOOD PLAN





# On route....



A continuous conversation and a journey as important as the destination.



# Learning from others...160 successful referendums to date

<http://www.exeterstjamesforum.org/st-james%20plan>



## Achieving the Vision

To help achieve the Vision, the Neighbourhood Plan will set out a range of policies and projects to help shape how development is brought forward in St. James

## What are policies?

Policies are statements of what the community would like to see happen in St James. They are intended to encourage third parties who might invest / develop in St James to work in accordance with the Neighbourhood Plan and Exeter City Council Planning Policies. They are meant to be positive to encourage the types of development that the community wants and needs.

## What are projects?

Policies are not the same as projects. Projects will be actively promoted and taken forward by the community and will generally relate to improvements to a particular part of St James.



# Introducing the Sid Valley Referendum Question



Do you want East Devon District Council to use the neighbourhood plan for the Sid Valley to help it decide planning applications in the neighbourhood area?



# Sid Valley Neighbourhood Plan Steering Group Organisational Chart

